

**TMEM176A Rabbit pAb**  
**TMEM176A Rabbit pAb**  
**Catalog # AP93980**

## Specification

## TMEM176A Rabbit pAb - Product Information

Application	WB, IHC-P, IHC-F, IF
Primary Accession	<a href="#">Q9DCS1</a>
Reactivity	Mouse
Host	Rabbit
Clonality	Polyclonal
Calculated MW	26 KDa
Physical State	Liquid
Immunogen	KLH conjugated synthetic peptide derived from MOUSE TMEM176A
Epitope Specificity	1-100/235
Isotype	IgG
<b>Purity</b>	
affinity purified by Protein A	
Buffer	0.01M TBS (pH7.4) with 1% BSA, 0.02% Proclin300 and 50% Glycerol.
SUBCELLULAR LOCATION	Membrane.
SIMILARITY	Belongs to the TMEM176 family.
Important Note	This product as supplied is intended for research use only, not for use in human, therapeutic or diagnostic applications.

## Background Descriptions

TMEM176A is a 235 amino acid multi-pass membrane protein belonging to the TMEM176 family. The gene encoding GS188 maps to human chromosome 7, which houses over 1,000 genes and comprises nearly 5% of the human genome. Chromosome 7 has been linked to Osteogenesis imperfecta, Pendred syndrome, Lissencephaly, Citrullinemia and Shwachman-Diamond syndrome. The deletion of a portion of the q arm of chromosome 7 is associated with Williams-Beuren syndrome, a condition characterized by mild mental retardation, an unusual comfort and friendliness with strangers and an elfin appearance. Deletions of portions of the q arm of chromosome 7 are also seen in a number of myeloid disorders including cases of acute myelogenous leukemia and myelodysplasia.

### TMEM176A Rabbit pAb - Additional Information

**Gene ID** 66058

## Other Names

Transmembrane protein 176A, Gene signature 188, Kidney-expressed gene 2 protein, Tmem176a, Gs188, Keg2

## Dilution

WB~~1:1000  
IHC-P~~N/A

=<span class = "dilution\_IHC-F">IHC-F~~N/A</span><br \><span class = "dilution\_IF">IF~~1:50~200</span>

**Format**

0.01M TBS(pH7.4), 0.09% (W/V) sodium azide and 50% Glyce

**Storage**

Store at -20 °C for one year. Avoid repeated freeze/thaw cycles. When reconstituted in sterile pH 7.4 0.01M PBS or diluent of antibody the antibody is stable for at least two weeks at 2-4 °C.

**TMEM176A Rabbit pAb - Protein Information**

**Name** Tmem176a

**Synonyms** Gs188, Keg2

**Cellular Location**

Membrane; Multi-pass membrane protein

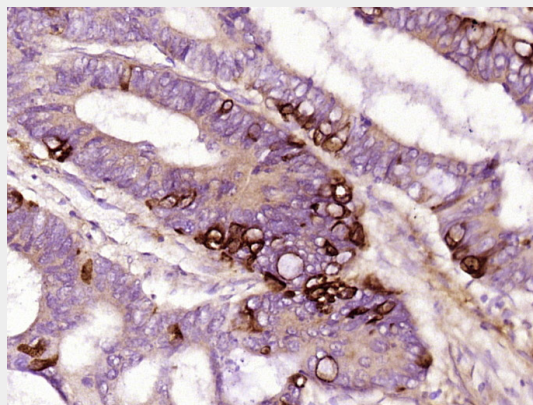
**Tissue Location**

Specifically expressed in lung, kidney and spleen.

**TMEM176A Rabbit pAb - Protocols**

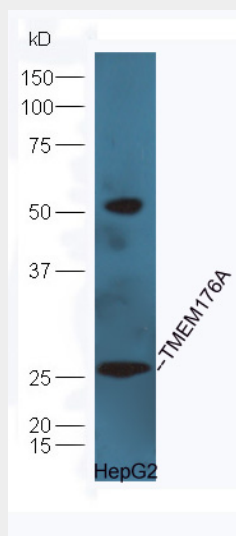
Provided below are standard protocols that you may find useful for product applications.

- [Western Blot](#)
- [Blocking Peptides](#)
- [Dot Blot](#)
- [Immunohistochemistry](#)
- [Immunofluorescence](#)
- [Immunoprecipitation](#)
- [Flow Cytometry](#)
- [Cell Culture](#)

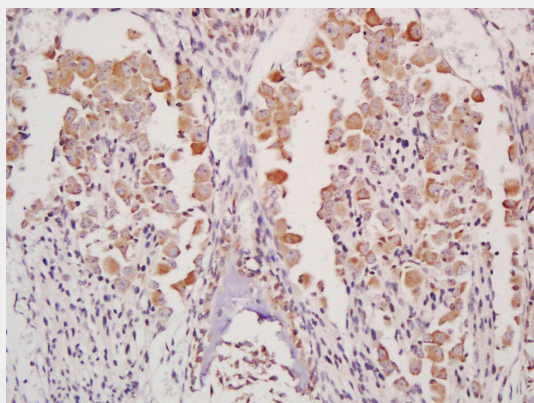
**TMEM176A Rabbit pAb - Images**

Paraformaldehyde-fixed, paraffin embedded (human colon carcinoma); Antigen retrieval by boiling in sodium citrate buffer (pH6.0) for 15min; Block endogenous peroxidase by 3% hydrogen peroxide for 20 minutes; Blocking buffer (normal goat serum) at 37°C for 30min; Antibody

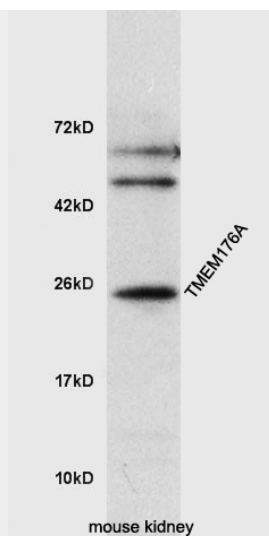
incubation with (TMEM176A) Polyclonal Antibody, Unconjugated (AP93980) at 1:400 overnight at 4°C, followed by operating according to SP Kit(Rabbit) (sp-0023) instructions and DAB staining.



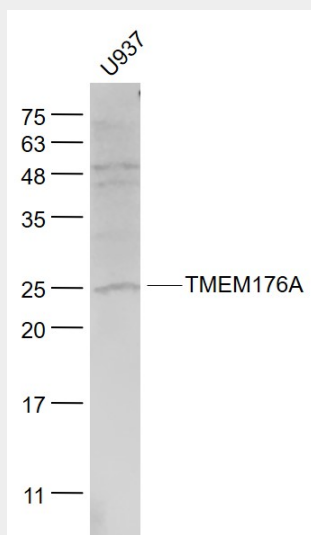
Protein: HepG2(human) lysates at 30ug; Primary: rabbit Anti-TMEM176A (AP93980) at 1:300; Secondary: HRP conjugated Goat-Anti-rabbit IgG(bs-0295G-HRP) at 1: 5000; Predicted band size:26 kD Observed band size:26 kD



Tissue/cell: mouse embryo tissue; 4% Paraformaldehyde-fixed and paraffin-embedded; Antigen retrieval: citrate buffer ( 0.01M, pH 6.0 ), Boiling bathing for 15min; Block endogenous peroxidase by 3% Hydrogen peroxide for 30min; Blocking buffer (normal goat serum,C-0005) at 37°C for 20 min; Incubation: Anti-TMEM176A Polyclonal Antibody, Unconjugated(AP93980) 1:200, overnight at 4°C, followed by conjugation to the secondary antibody(SP-0023) and DAB(C-0010) staining



Protein: mouse kidney lysates, 30ug; Primary: Anti-TMEM176A (AP93980) at 1:300; Secondary: HRP conjugated Goat Anti-Rabbit IgG(bs-0295G-HRP) at 1:5000; ECL excited the fluorescence; Predicted band size : 24kD Observed band size : 24kD



Sample: U937(Human) Cell Lysate at 30 ug Primary: Anti- TMEM176A (AP93980) at 1/1000 dilution Secondary: IRDye800CW Goat Anti-Rabbit IgG at 1/20000 dilution Predicted band size: 26 kD Observed band size: 25 kD

### TMEM176A Rabbit pAb - Background

This product as supplied is intended for research use only, not for use in human, therapeutic or diagnostic applications.